




WELBECK

WALKS AT WELBECK

CUCKNEY WATER MEADOWS

Blue Trail

 **DISTANCE:**
9.68km (round trip)

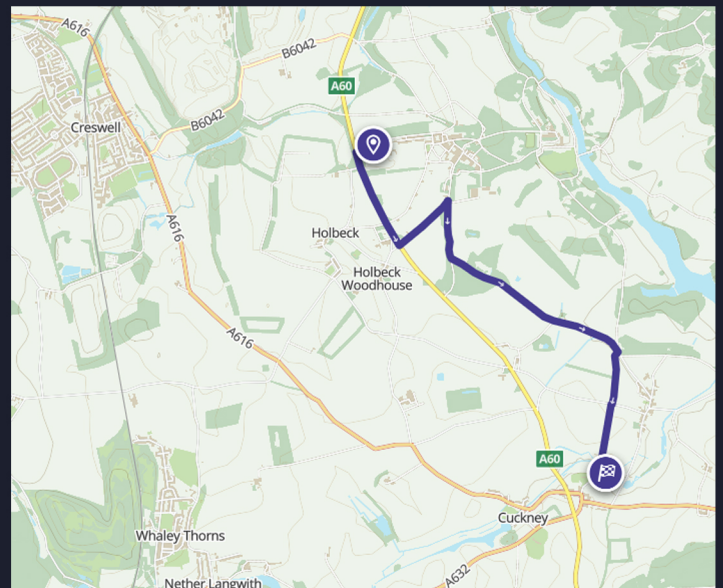
 **TIME:**
3.5hrs (round trip)

 **DIFFICULTY:**
Moderate

 **OS MAP:**
Explorer 270

A scenic countryside walk through fields to the nearby village of Cuckney, with views of the picturesque water meadows and Grade I listed church.

Accessibility: A moderate walk that includes a range of surfaces, with some slight inclines, fields, country road crossings, steps, uneven stretches and stile.




Please respect the landscape. Keep dogs on short leads and always follow the paths to help us protect wildlife. Please take your litter home with you.

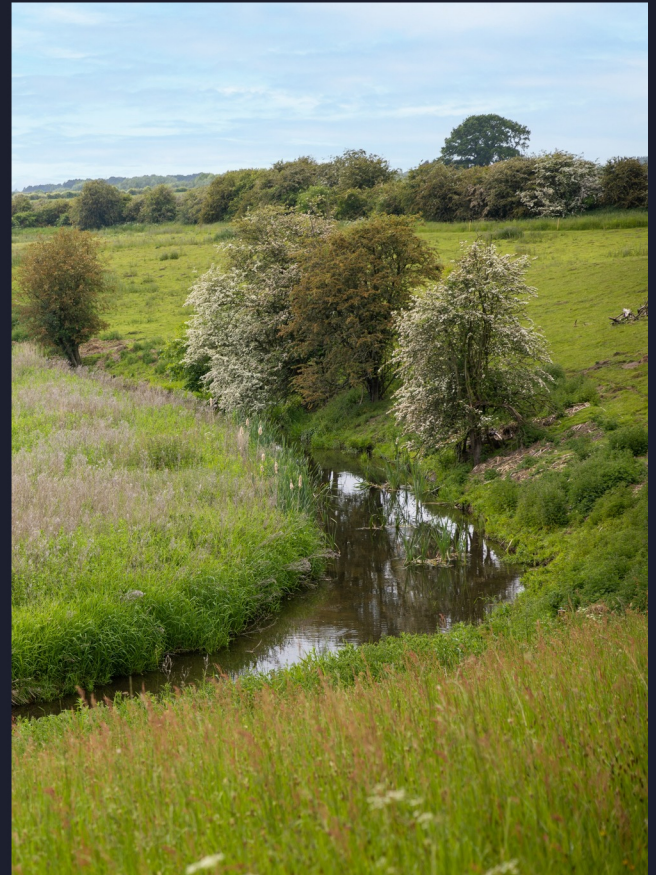
The car park is open Monday - Saturday, 8am - 5pm. Sunday 8am - 4pm. Closed Easter Sunday and over the Christmas period. Free parking. Please note the car park gate is locked at the close of business. (Times may vary)

Dogs are welcome on the public rights of way across Welbeck, but to help us protect our wildlife, livestock, and crops, please keep them on the lead and under close control.

DIRECTIONS - CUCKNEY WATER MEADOWS

 Please follow the blue trail signs

1. Start this walk in The Courtyard at Welbeck. From here, head up through the car park towards the picnic area.
2. Walk through the door in the wall and along the path. Continue through the woodland and fields until you reach Lady Margaret Hall.
3. At Lady Margaret Hall turn left onto the Robin Hood Way towards Welbeck Village.
4. Continue until you reach the junction. Turn right and head away from Welbeck Village. *Note: Welbeck Village is a private estate and closed to visitors, please keep to the designated route and do not ignore the private/no entry signs.*
5. Follow the road until you reach the second Welbeck lodge and the iron gates. Please be careful on this road. It is frequently used by Estate vehicles.
6. Across from the second lodge, you will see a kissing gate. Go through and continue across the fields until you reach the road on the outskirts of Norton. Carefully cross the road and continue on the path through the fields.
7. Follow the verge until you come to a stile. Climb through and carefully walk down the steps until you reach Cuckney Water Meadows.
8. From here, you can head into Cuckney Village and visit the Greendale Oak or retrace your steps to The Courtyard at Welbeck to enjoy lunch or coffee and cake at The Harley Café.



Looking for a more detailed map?

Scan the QR code or visit
www.welbeck.co.uk

